

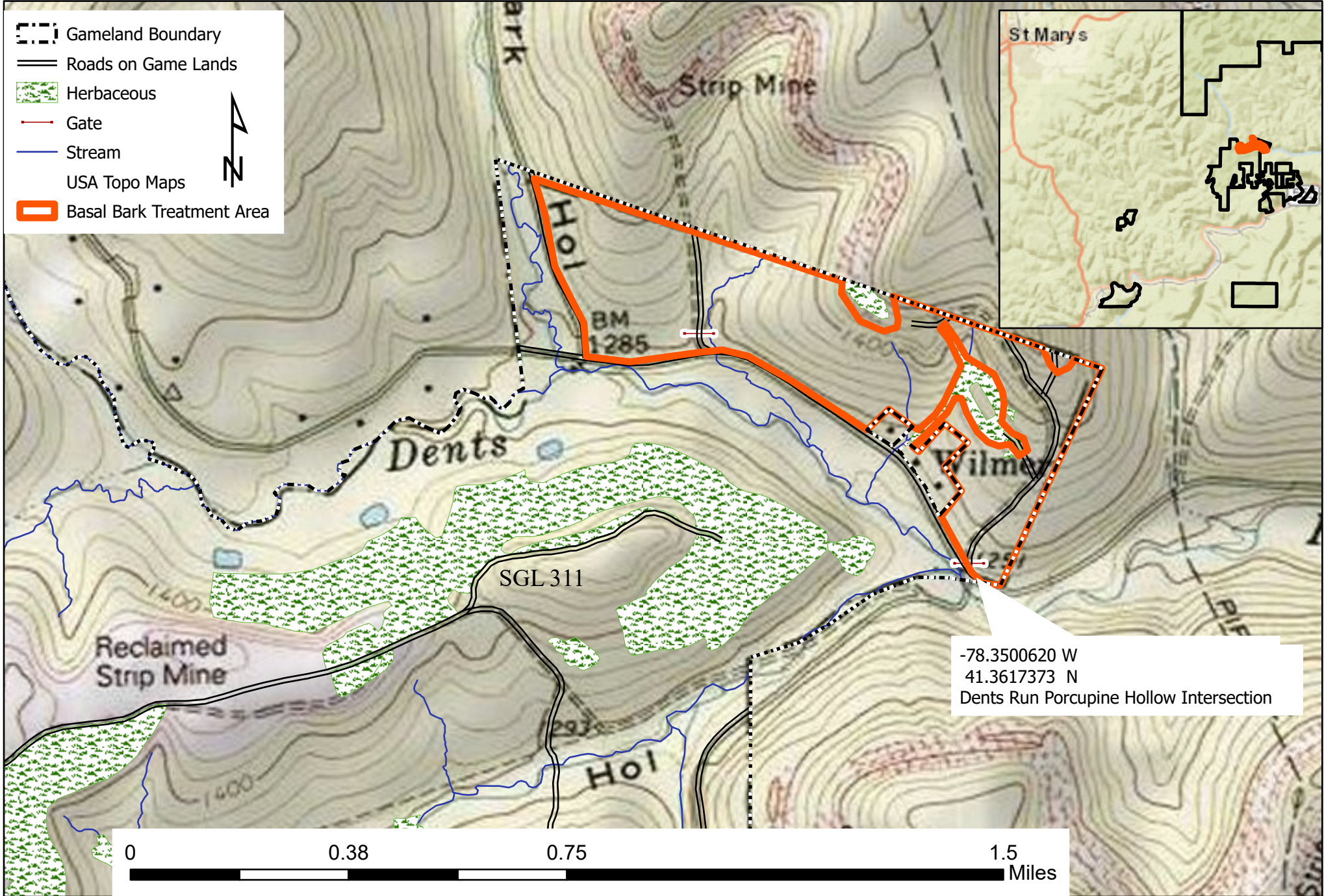
SGL # 311 Basal Bark Treatment



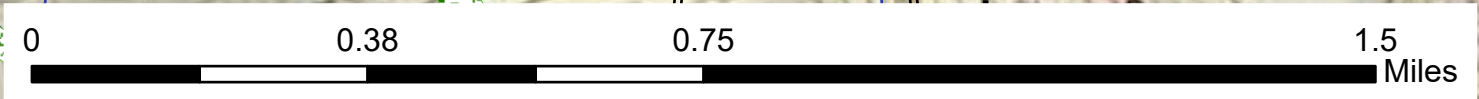
Elk County Benezette Township

74 Acres

- Gameland Boundary
- Roads on Game Lands
- Herbaceous
- Gate
- Stream
- USA Topo Maps
- Basal Bark Treatment Area



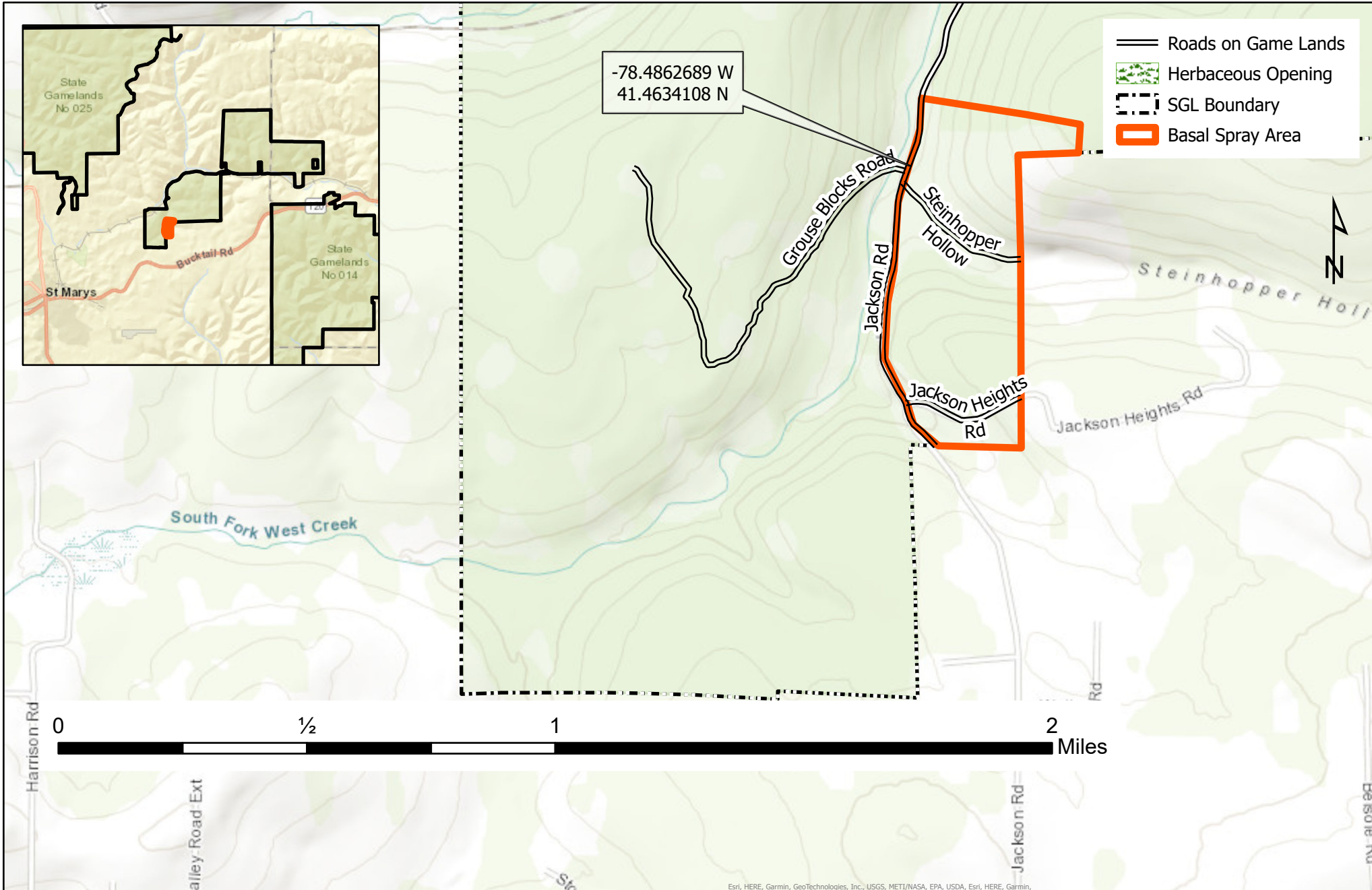
-78.3500620 W
41.3617373 N
Dents Run Porcupine Hollow Intersection



SGL # 293 Basal Spray

City of St. Marys Elk County

62 Acres



-78.4862689 W
41.4634108 N

- Roads on Game Lands
- ▨ Herbaceous Opening
- - - SGL Boundary
- ▭ Basal Spray Area

0 1/2 1 2 Miles